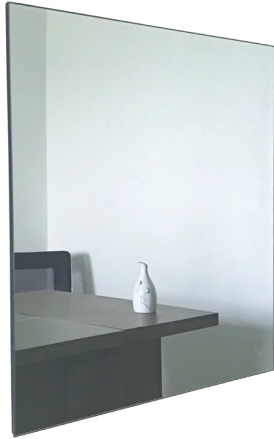


## SIKU Infraplate pro Mirror Infrared heating plates



The new SIKU Infraplate pro heating plates are the most advanced solution for efficient, comfortable and inexpensive heating in living rooms.

- timeless and slim design
- clean, noiseless and dust-free indoor climate
- Reduction of air circulation
- low acquisition and maintenance costs
- little need for space
- easy wall or ceiling mounting

### PRODUCT DESCRIPTION

**Surface:** Mirror  
**Rear material:** Aluminium  
**Frame:** Frameless  
**Heating element:** Carbon crystal  
**Surface temperature:** 70-90°C  
**Overheating protection:** Yes  
**Electrical efficiency:** 98%  
**IP:** IP54  
**Cable length:** 1,9 m  
**Mounting:** Wallmounting  
**Warranty:** 2 years

### Technical Data

Model	Dimensions (mm)	Current	Voltage	Current	Weight	Certificates	IP
SIKU IPP 320 M	600 x 600 x 12	320 W	230 V / 50 Hz	1,5 A	8,5 kg	RoHS, CE	IP54
SIKU IPP 450 M	600 x 800 x 12	450 W		2,0 A	11,3 kg	RoHS, CE	
SIKU IPP 700 M	600 x 1200 x 12	700 W		3,0 A	16,4 kg	RoHS, CE	

### Application example

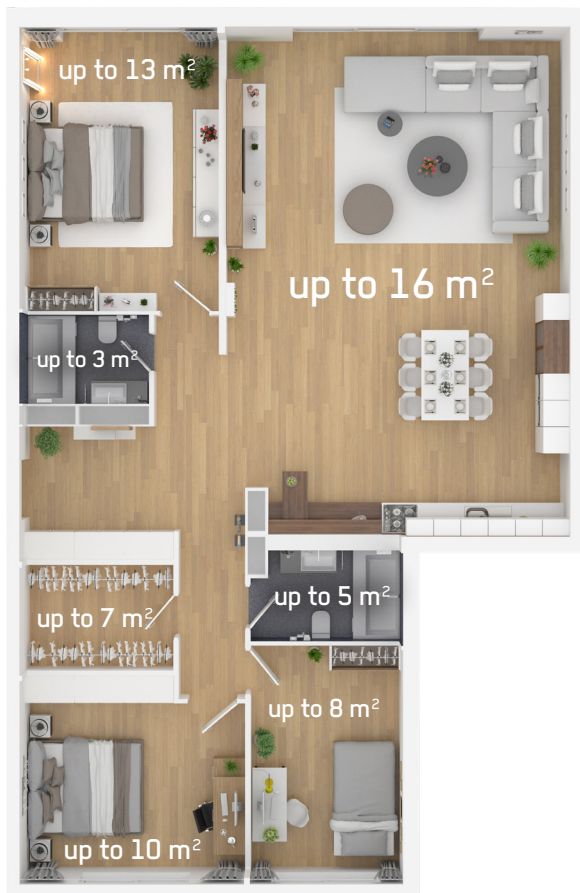


The SIKU Infraplate pro heating plates represent high heating output, safe processing and excellent quality.

The heating element is made of high-quality carbon crystal and enables high efficiency. As a result, the thermal energy is generated exactly where it is needed. Thermal insulation on the back prevents heat loss. The heat energy radiates effectively to the front and creates a pleasant room climate. With this design, the room temperature can be kept 1-2 ° C lower while maintaining the same level of wellbeing. This way you can reduce your heating costs noticeably.

Install your Infraplate pro heater yourself now.  
 Simply hang up the heating plate, connect the desired thermostat and the heating plate and control them with one of our radio thermostats.

## The right infrared heater for any room



up to 13 m<sup>2</sup>  
IPP 700 M

up to 8 m<sup>2</sup>  
IPP 450 M

up to 5 m<sup>2</sup>  
IPP 320 M

The infraplate pro heating plates are available in numerous Versions for small and large rooms. Here's how it works: Measure the space → Calculate the area → Choose the right size.

Please note that the values mentioned here are only valid if the room has a height of approx. 2.5 meters and is insulated according to today's standard. In addition, the infrared heating panels must not be installed opposite a window.

The heating plates can be used almost anywhere without problems as an independent heating system or as additional heating for the transition periods. They can be perfectly integrated into any room. Warmth and well-being in new and old buildings, halls or hobby rooms, in winter gardens, wooden or holiday houses, in renovations in the roof or basement, in apartments, offices, workshops, shops, exhibition and sales rooms.

Install your Infraplate pro heating yourself now. Simply hang up the heating plate, connect the desired thermostat and heating plate and enjoy the heat.

Avialable models	Item number	Packaging unit
SIKU IPP 320 M	(Item no. 50488)	4 Pcs
SIKU IPP 450 M	(Item no. 50489)	4 Pcs
SIKU IPP 700 M	(Item no. 50490)	2 Pcs

Accessories	Item number	Packaging unit
SIKU IPP-ERV Receiver	(Item no. 50496)	60 Pcs
SIKU IPP-SRC Remote control	(Item no. 50495)	30 Pcs
SIKU IPP-HAHA Towel holder	(Item no. 50505)	40 Pcs
IPP-WKML Wall mounting plate large (for IPP700)	(Item no. 50527)	1 Pcs
IPP-WKMS Wall mounting plate, small (for IPP320 and IPP450)	(Item no. 50526)	1 Pcs
SIKU PT712 Room thermostat	(Item no. 50446)	1 Pcs
SIKU BT710 digital wireless room thermostat	(Item no. 50434)	1 Pcs
SIKU BT010 wireless room thermostat	(Item no. 50435)	1 Pcs
SIKU BT001 wireless receiver (flush mounting)	(Item no. 50436)	1 Pcs
SIKU BT003 wireless receiver (for the socket)	(Item no. 50437)	1 Pcs
SIKU BT002 wireless receiver	(Item no. 50624)	1 Pcs
SIKU TS20 Thermal switch socket	(Item no. 50520)	1 Pcs

Info according to the new Erp standard 1188: From 2018, the infraplate pro infrared direct heating may only be operated in combination with a room thermostat with time control and room ventilation detection!



Druckfehler, Irrtümer und technische Änderungen vorbehalten.